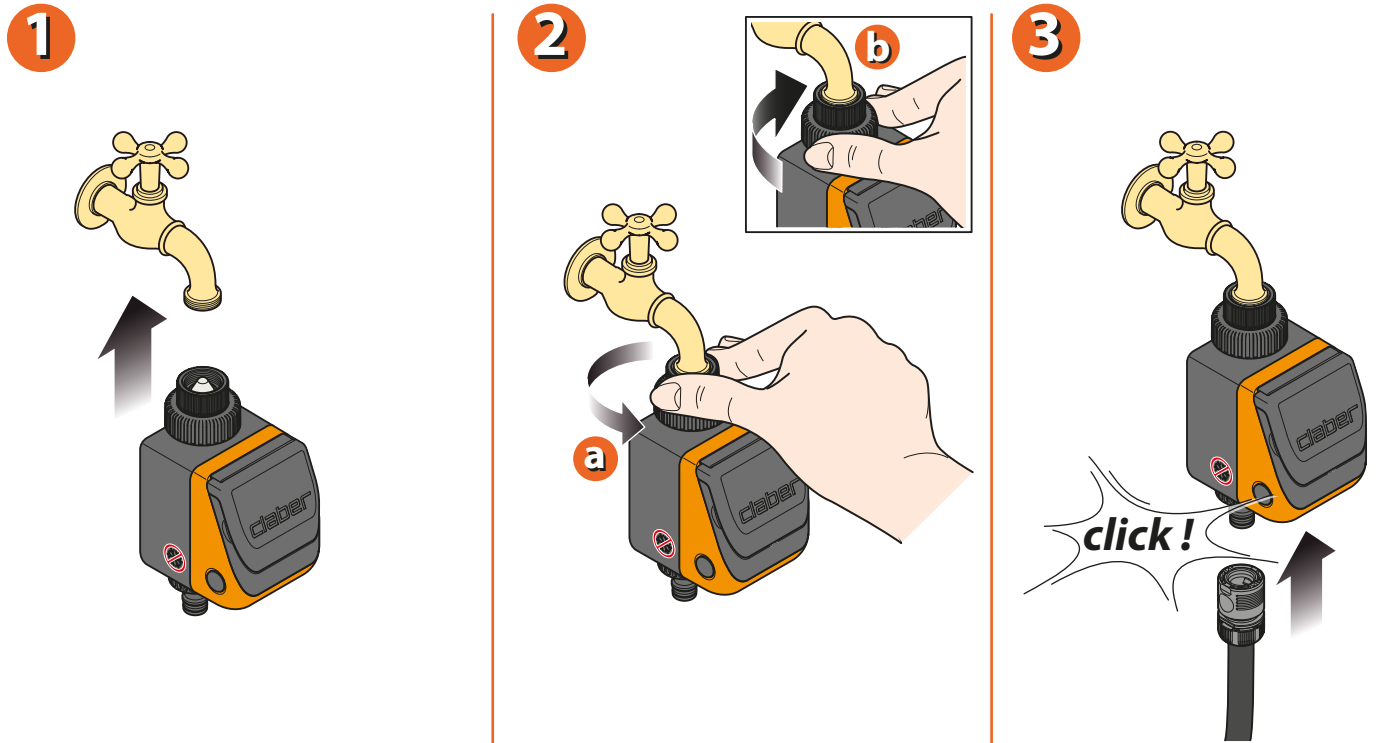
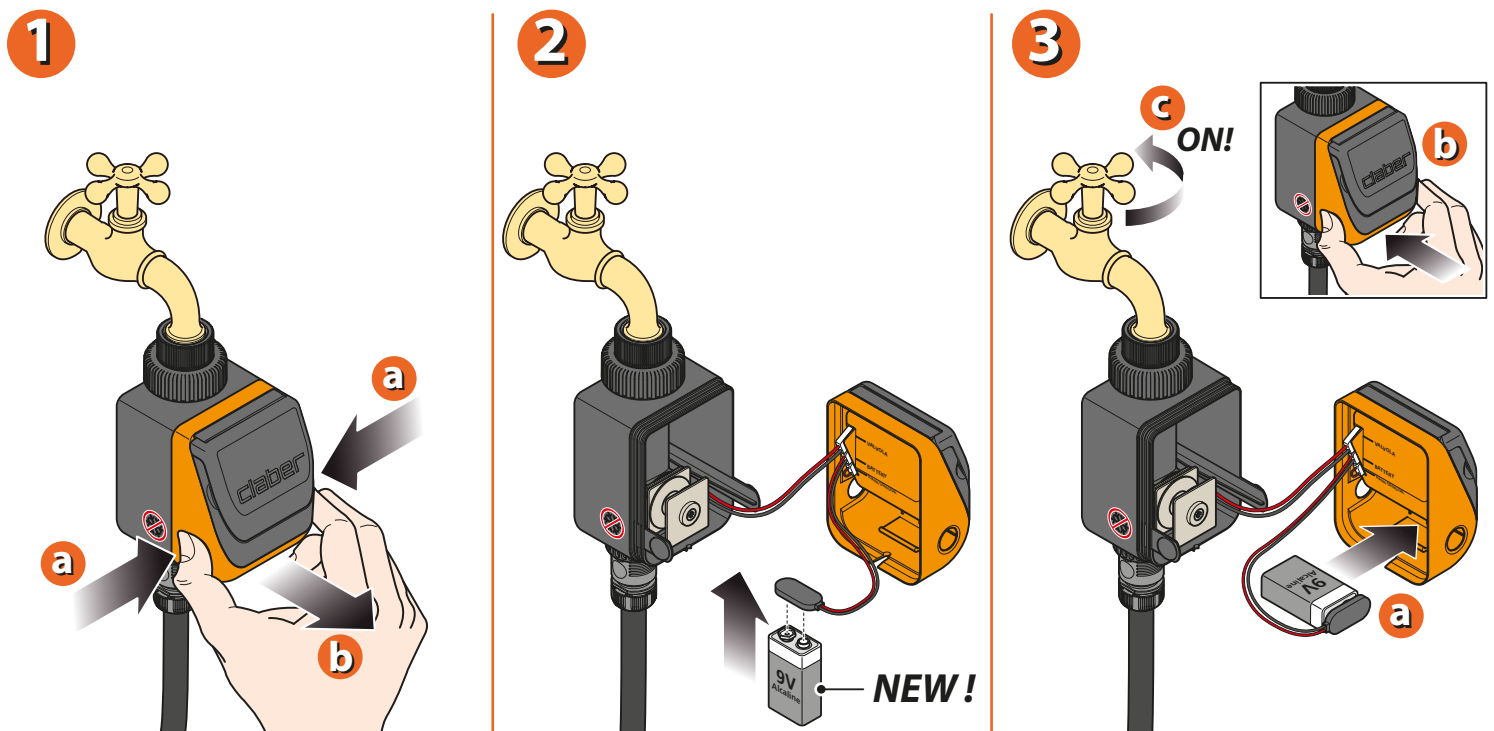


Connect the timer to the tap.



For Aquauno Logica (p/n): 8444 - 8422
 For Aquauno Logica Plus (p/n): 8411 - 8419

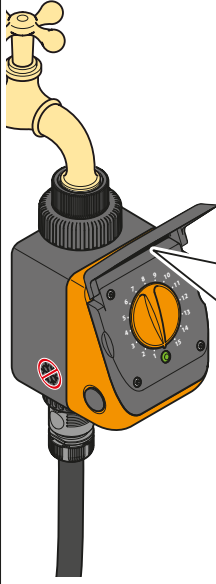
Open the timer unit by pressing the two buttons on the sides, and fit a 9V alkaline battery.
Important: remember to turn on the water tap!



For Aquauno Logica (p/n): 8444 - 8422
 For Aquauno Logica Plus (p/n): 8411 - 8419

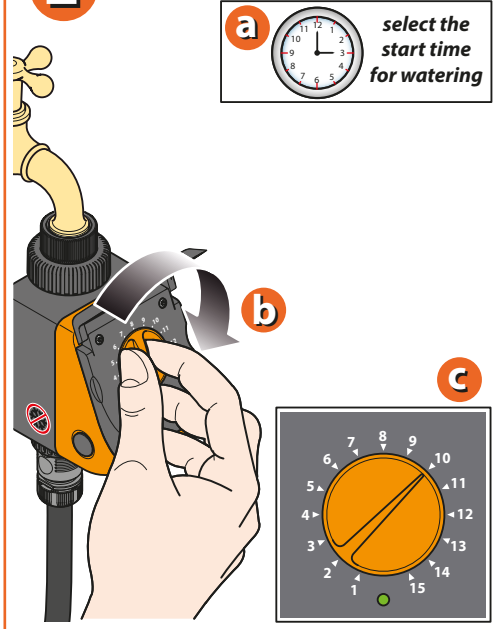
Select the required watering cycle by simply turning the knob to one of the 15 preset programmes. The description of the different programmes are listed on the protective cover. The selected programme starts after 10 seconds. A Led will blink during operation of the timer.

1



Programmes available:			
1	2 min.	EVERY	12h
2	5 min.	EVERY	12h
3	10 min.	EVERY	12h
4	1 min.	EVERY	24h
5	3 min.	EVERY	24h
6	5 min.	EVERY	24h
7	8 min.	EVERY	24h
8	10 min.	EVERY	24h
9	15 min.	EVERY	24h
10	30 min.	EVERY	24h
11	60 min.	EVERY	24h
12	5 min.	EVERY	2 days
13	15 min.	EVERY	2 days
14	30 min.	EVERY	3 days
15	60 min.	EVERY	7 days

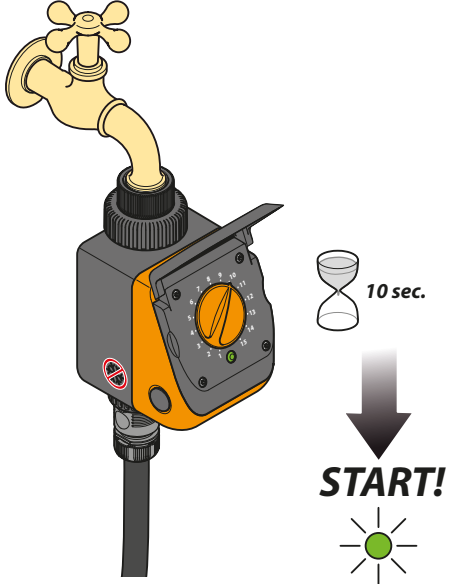
2



a select the start time for watering

c

3



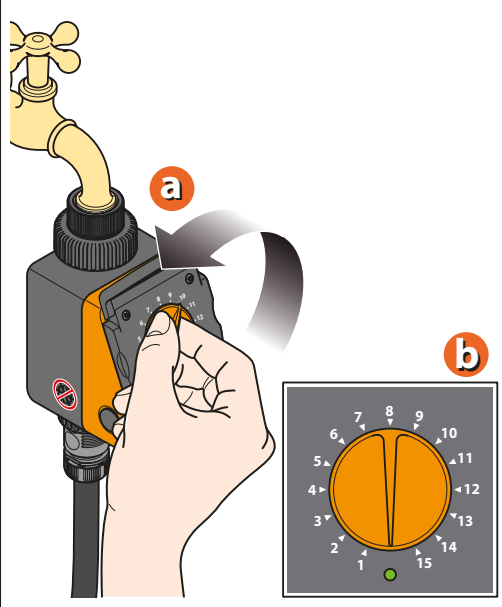
10 sec.

START!

For Aquauno Logica (p/n): 8444 - 8422
 For Aquauno Logica Plus (p/n): 8411 - 8419

The programme can be changed anytime by turning the knob to "0", then positioning it on another number. With the knob at "0", the programme currently running will be cancelled.

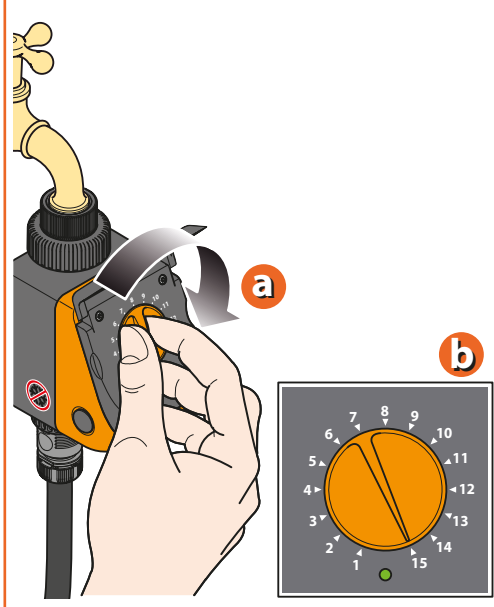
1



a

b

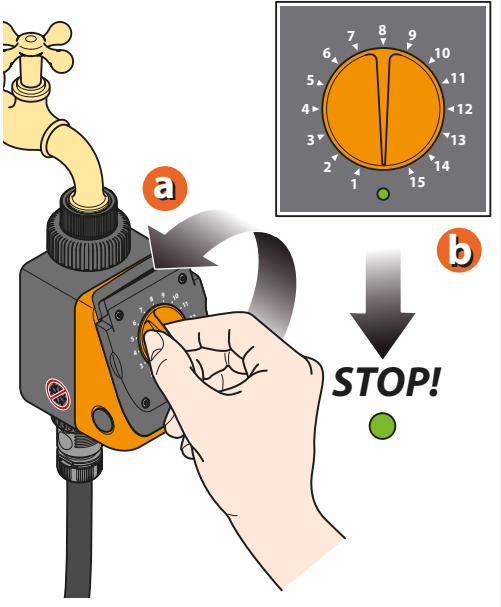
2



a

b

3



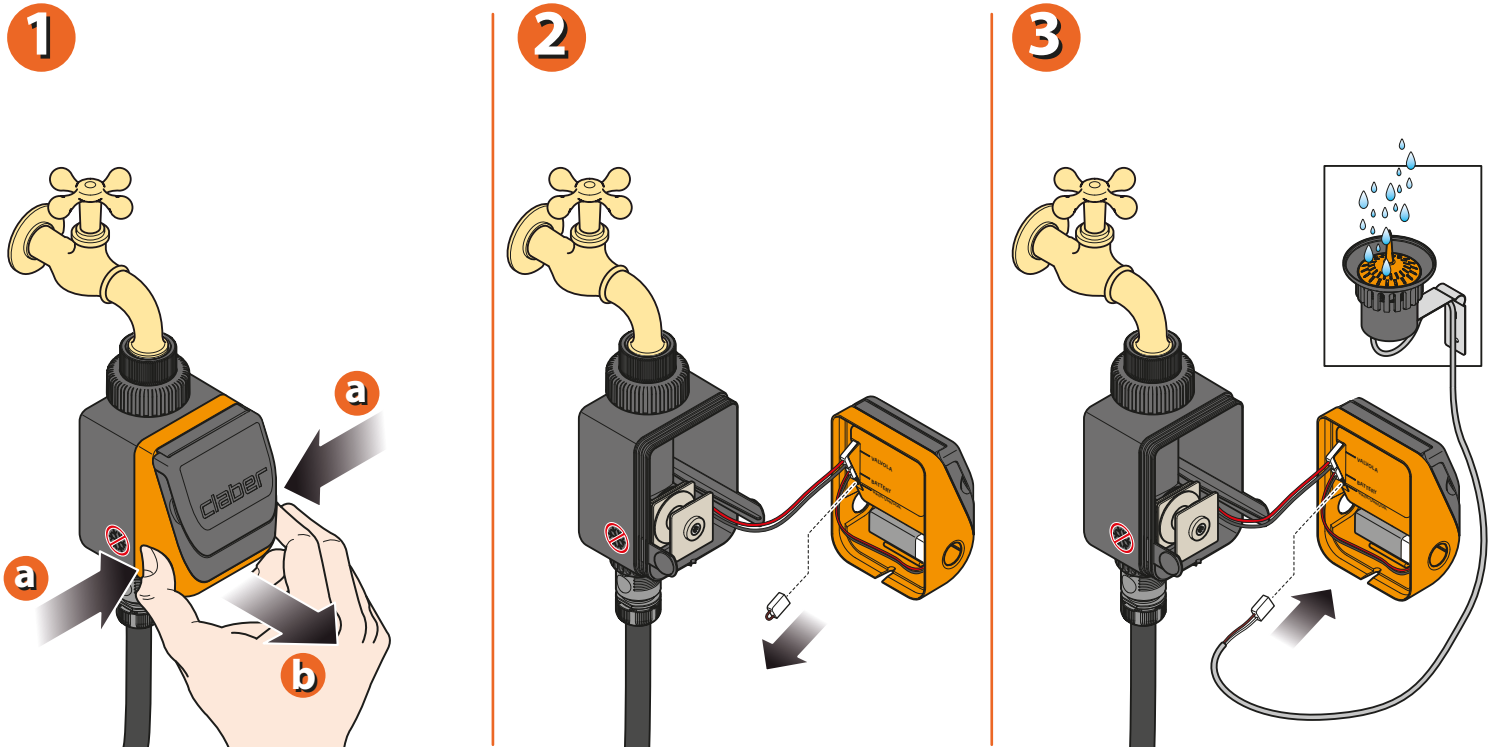
a

b

STOP!

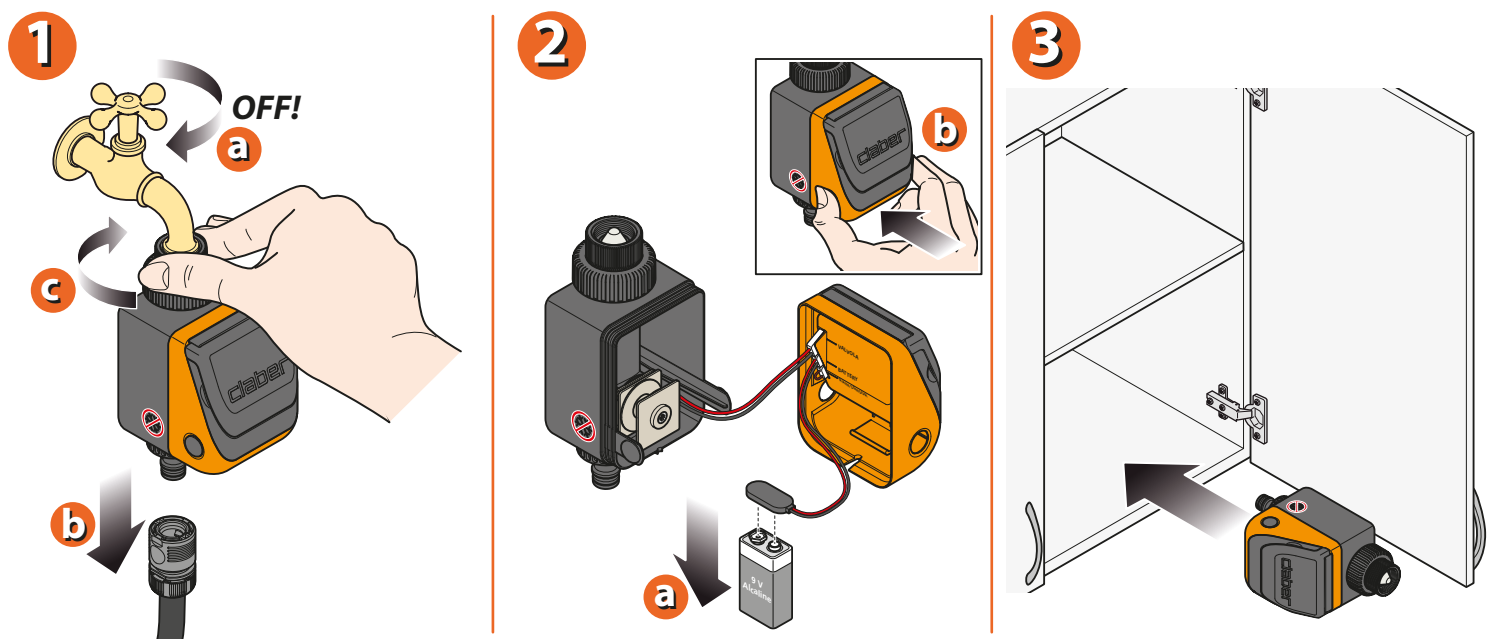
For Aquauno Logica (p/n): 8444 - 8422
 For Aquauno Logica Plus (p/n): 8411 - 8419

The timer can also be connected to the Rain Sensor, using the socket provided, in which case the protective jumper must be removed.



For Aquauno Logica Plus (p/n): 8411 - 8419

At the end of the warm season and before the first winter frosts, disconnect the timer from the tap and store it indoors, bearing in mind to remove the battery.



For Aquauno Logica (p/n): 8444 - 8422
 For Aquauno Logica Plus (p/n): 8411 - 8419

For more information and further details, please consult the instruction manual supplied with the product.