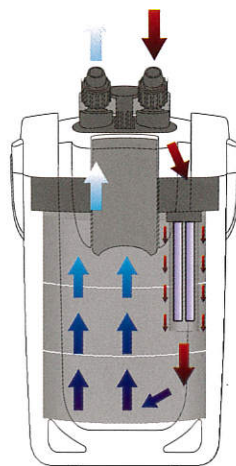


# OUTSIDE FILTER

## INSTRUCTION MANUAL

Before operating this appliance, please read this instruction manual completely and keep it handy for future reference!

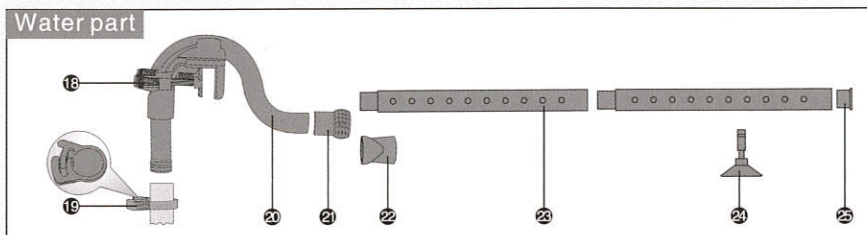
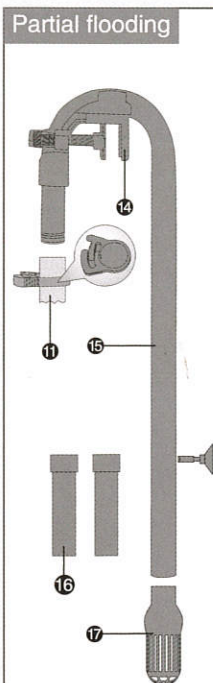
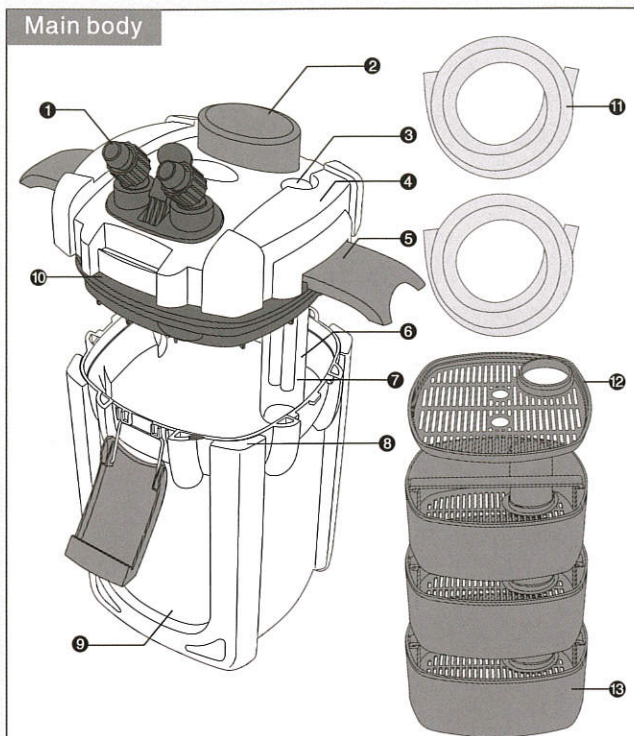


**HW-702A/B**  
**HW-703A/B**  
**HW-704A/B**

*Touch the Reflection*  
GREAT OUTFLOW  
HIGH HEAD

# 一、COMPONENTS

## Terms of Positions and Parts



1	Input And Output Discreteness	8	Decoration Strip	15	Inlet Bend Pipe	22	Outlet
2	Primer Button	9	Main Body	16	Connecting Tube	23	Spray Bar
3	Switch	10	Ballast Part	17	Filter Casing	24	Sucker
4	Cover	11	Pipe	18	6*40 Plastic Screw	25	Spray Bar Cover
5	Buckle	12	Draining Skep Cover	19	Hose Locker		
6	Quartz Tube	13	Draining Skep	20	Outlet Bend Pip		
7	UV Lamp	14	Elbow Fixing Base	21	Outlet Connection Flange		

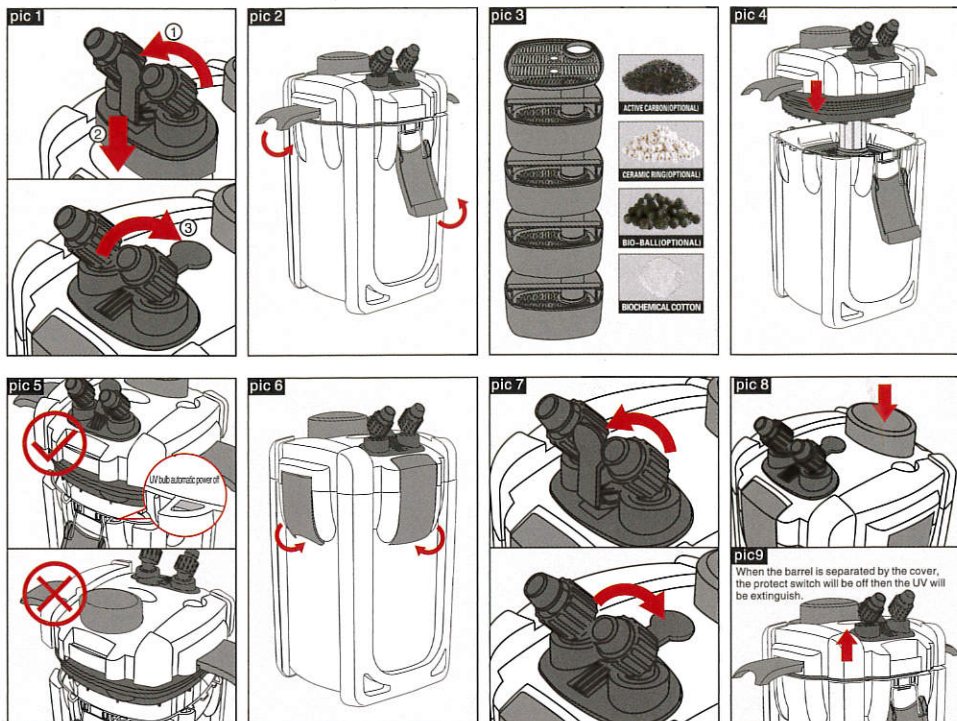
## 二、PRODUCT SPECIFICATIONS

MODEL	HW-702A	HW-702B	HW-703A	HW-703B	HW-704A	HW-704B
VOLTAGE	220-240V/50Hz	220-240V/50Hz	220-240V/50Hz	220-240V/50Hz	220-240V/50Hz	220-240V/50Hz
POWER	24W	24W	30W	30W	45W	45W
OUTPUT	1000L/h	1000L/h	1400L/h	1400L/h	2000L/h	2000L/h
H-MAX	1.4m	1.4m	2.0m	2.0m	2.5m	2.5m
UV POWER	/	9W	/	9W	/	9W
WEIGHT	3.5kg	3.5kg	4.5kg	4.5kg	5.0kg	5.0kg

## 三、OPERATION GUIDE

1. Take out the inlet&outlet taps from the accessories box, as shown in pic 1, pull up the small handle to place ①, then push the inlet&outlet taps to the filter head ②, fasten using the small handle ③.
2. As shown in pic 2, to set your filter up, the four buckles should be unclamped from the main body, then separate the head from the base of the filter.
3. Add the filter materials as you like, the pic 3 is for your reference.
4. Insert the UV bulb and quartz tube to the right place, as shown in the pic 4, then fasten the filter head to the base of the filter.
5. When the barrel is separated by the cover, the protect switch will be off then the UV will be extinguish to avoid the damage to body, so please take care of the place of switch, as shown in pic 5(only for B Series).
6. Repeat the step 2 refasten the filter head to the base of filter. Fix the inlet and outlet assembly (Please refer to the parts list) to the tank according to pic 10, and tighten the screws on the fixing base.
7. The small handle between the inlet&outlet taps is the shut of valve.
8. As shown in pic 8, press down the primer button on top of the filter head, this will prime this filter drawing water in through the hose, repeat this if necessary until all pipework is full of water.
9. The UVC lamp must be replaced after 8,000 hours of operation in order to ensure that the filter UVC continues to operate with optimum effectiveness(only for B Series).

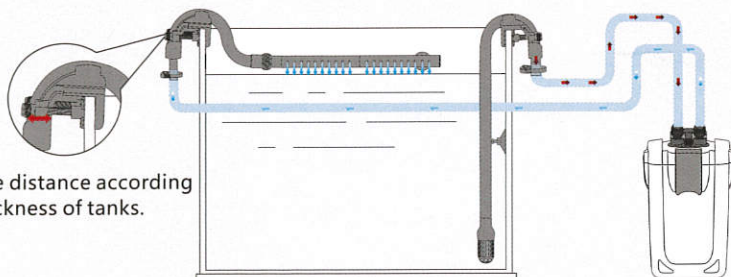




## Location to place

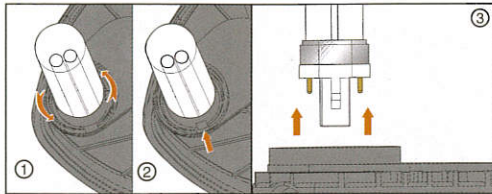
Pic10

Adjust the distance according to the thickness of tanks.



Placed in parallel in the fish tank.

## 四、THE METHOD OF REPLACING THE UV LIGHT TUBE



1. According to the diagrammatic presentation, please open the lid from the mail body carefully. Put the lid in inversion, then hold the quartz tube and circumgyrate in lightly, just as the left picture shows. When the gap of the quartz tube and the gap of the

connection of the light tubes are accordant, pull out the quartz tube.

2. According to the diagrammatic representation, pulling out the bad light tube.

3. Nstalling the new light tube and the quartzose tube.

## 五、FILTER MANAGEMENT

PROBLEM	CAUSE	SOLUTION
Pressing the inhale buckle(blue buckle),the filter has no response	The wrong join of input and output bar	Join input and output bar again
	The power is off	Turn on the power
	The shaft is broken	Replace the shaft
The motor is not operation	The impeller is missing or the motor is clogged with foreign materials such as pebbles and shells.	Set the impeller or clean out the drive system
Inhibited water flow (inhibited functioning)	Hose adaptor unit is excessively dirty	Detach the hose adaptor unit and clean the inside with a brush
	Hose have been incorrectly connected	Check whether the hose entangled or crimped
	Excessive dirt build-up in the hoses	Periodically clean the inside of the hoses and the intake an drainage pipes
Abnormal sound emitted when staring the filter	Filter media is clogged	Remove the filter media and wash with tank water
	Air is entering from the hose connection.	Check whether the hoses are connected properly.
	Air is remaining in the filer case.	Leaving the power on, shake the unit to help remove remaining air.
Abnormal sound emitted when operating the filter	Insufficient application of Vaseline.	Apply ample Vaseline to all of the O-rings.
	Air is remaining in the filter.	Remove and replace tae plug ire the socket 3-4 times Gently shake the filter to remove remaining air
	Damaged impeller/drive magnet or spindle.	Replace parts (consult place of purchase)
	Decrease ire water flow die to water staining or dirt or the impeller/drive magnet	Set the impeller or clean out the drive system



Before open the cover of the filter, please cut off the electricity first.

