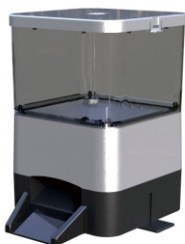


## User manual

### Automatic Koi Feeder



The company will provide a one-year free warranty service for cardholders.

Within one year from the date of purchase, any failure or damage caused by the manufacturing process or materials confirmed by the maintenance personnel of the company can be guaranteed free of charge.

One of the following cases, although in the warranty period, but can not enjoy free warranty services.

We will repair the equipment under all conditions, but will recover part of the cost.

- 1) the product is damaged due to incorrect power supply.
- 2) damage caused by incorrect installation.
- 3) damage caused by modification not approved by the company.

Free warranty only for the maintenance of faulty products free of charge, does not include the maintenance caused by other costs.

If the product is damaged beyond the free warranty period, we promise to repair it, but we will recover the cost of parts at our discretion.

1

## Fit for

- Indoor and outdoor fish ponds, large fish tanks, ponds.
- More than 2mm fish food, less than 12mm fish food.
- Dried shrimp and live insects and Irregular food can not be used.

## Specification:

Item name: Automatic Koi feeder  
 Item No.: EV804/810  
 Material: ABS+PC  
 Gross weight: 2.8kg/3.5kg  
 Packing meas.: 265\*265\*280/265\*265\*380mm

## Model:

Model	Volume	Battery	Dc	Wi-Fi	Solar
EV804A/810B	4/10L	●			
EV804C/810D	4/10L	●	●		
EV804W/810W	4/10L	●	●	●	
EV804S/810S	4/10L	●	●		●
EV804SW/810SW	4/10L	●	●	●	●

2

## List:

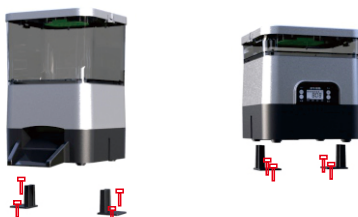


- 1 Cover
- 2 4L bucket (optional)
- 3 Stir gear
- 4 Reduction cube
- 5 Food guide
- 6 Desiccant basket
- 7 10L bucket (optional)
- 8 Feed draw
- 9 LCD Operation panel or Wi-Fi panel
- 10 Base
- 11 Mounting support
- 12 Battery door
- 13 Stainless screws
- 14 AC DC adapter (optional)
- 15 Solar panel (optional)

3

## Installation:

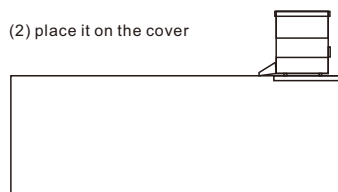
- Outdoor installation



(1) outdoor screw to the ground or wood fixed

- Indoor installation

(2) place it on the cover



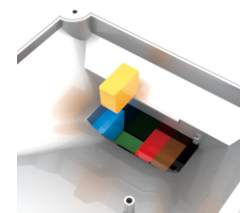
The color and appearance are for reference only.  
 Functions are subject to change without prior notice.

4

Place the Reduction cube

Basic volume is 30 grams

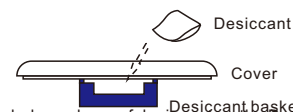
Reduction cube  
 (mind the step direction,  
 frame must be flattened)



Place an cube minus about 5 grams. The smallest volume is 5 grams

(the grams referred to in this manual are for reference only, and the general koi floatation materials are for reference)

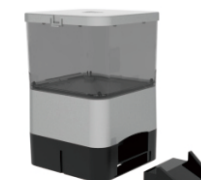
- Desiccant placement only long time outside needed



- A. Put the whole package of desiccant on the Desiccant basket.
  - B. Put the whole package of desiccant over the food in the transparent bucket
- Choose one of the above methods

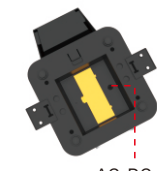
5

- Food guide installation



Usage: directly insert the Food guide into the feed outlet position.  
 Remove method, hook the bottom button, pull out the guide slot.

- Battery installation

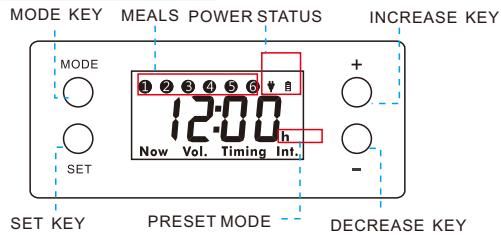


AC DC port

Open the battery cover and put in four LR06 AA alkaline batteries  
 Attention: old and new batteries cannot be mixed.

6

## operation panel



### Preset timing mode

Hold 'mode' 'set' '+key'  
Press '+key' to select as follow task  
"h" Show.

1d8 8times per day  
6:00 8:00 10:00 12:00 14:00  
16:00 18:00 20:00

1d6 6times per day  
6:00 8:00 10:00 12:00 14:00 16:00

1d4 4times per day  
8:00 12:00 16:00 20:00

1d3 3times per day  
8:00 12:00 18:00

1d2 2times per day 8:00 18:00

1d1 1time per day 8:00

2d1 1time every 2 days 8:00

3d1 1time every 3 days 8:00

4d1 1time every 4 days 8:00

OFF back to normal mode "h" Gone.



7

## Setting guide:

### Time setting

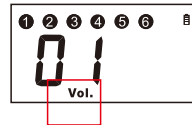
Time is local time  
Tell the machine what time it is  
The default time is 12:00



Press MODE key(usually do not need to press) to change to Now Mode, Hold SET key, and the clock flash.  
Press + key or - key for adjustment. Short press SET key, minute flash, press + key or - key for adjustment.  
Press the SET key to complete.

### Portion setting

The portion is the number of times that the drawer comes out.  
The default portion is 1.



Press MODE key to set the portions to Vol. Long Hold SET key, the number flashes.  
Press + key or - key to adjust from 1 to 99. Press SET key to complete.

No reduction cube, for about 30 grams.  
Place one reduction cube for 25 g; Place two for 20g  
Place three for 15g; Put four for 10 grams  
Place five deductions for 5 grams.  
The grams here is only for reference.

8

Timing setting  
Feed at appointed time.  
The default timer is 12:00  
1-6 meals per day



Attention: ①②③④⑤⑥ and the corresponding time must be arranged from early to late, or the wrong order will lead to screen display ERRO.

For example: two meals for 8:09 and 13:00.

Press MODE key(2 times) to switch to Timing mode. Hold SET key, meal① clock flashes, press + key or - key to adjust to 8. Press SET key, switch to minutes, and adjust to 09. press SET key again, meal② clock flashes, adjust to 13. Press SET key, switch to minutes, and adjust to 00. The rest four meals do not need to change when it displaces - - - -, press SET key for 8 times to end. If not, refer to the method below to close.

Turn off unnecessary timing, e.g. turn off meal ② (13:00):  
Press MODE key (2 times) to switch to Timing mode and hold SET key. then press SET key 2 times to meal② clock at 13, and press the + key and - key at the same time, - - - -show, then close;  
Or adjust clock to 24, - - - -show, then close.

Anti-check timing Settings  
In Timing mode, press + key or - key to check schedule.

9

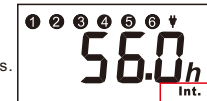
Interval setting  
Feed in cycles every few days  
The default interval is 0  
for daily cycle feeding



Press the MODE key (3 times) to set the interval. Hold the SET key, and press the + key or - key to adjust the number of days from 0 to 9. The number 0 means feeding every day, 1 means feeding every other day, namely feeding every 2 days. The maximum interval is 9. Press the SET key to end.

This interval is set with memory function and reconnecting the power supply will not change.

Tips: in the interval display screen, you can press the + key to query remaining time before the next feeding.  
1.1 hours is 1 hour and 6 minutes.  
56 hours is 2 days plus 8 hours.



Attention: if the SET key is long pressed, the interval will be calculated from the same day.

Attention: during feeding, one of the circles number of meals will flash.  
The order of flashing is related to the set timing, and the sequence closest to the feeding time will flash.  
If it does not flash, there is no feeding task for the day.



10

### Push out drawer

Long press - key for 3 seconds, the drawer will be opened once, showing OPEN.  
Short press - key, drawer recovery to closed state.



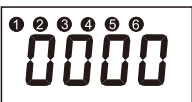
### Manual feeding

Long press + key for 3 seconds, the drawer will open and display the FEED, that is, manually FEED out. The number of times out of the drawer is related to the amount. (some products are not related to the quantity, the real product shall prevail)  
Does not affect timing Settings.



### Continuous feeding

Hold the MODE key and + key for 3 seconds, and the feeder will be in continuous feeding state. And automatically shows the number of times.  
From 0000 to a maximum of 9,999  
Short press - key, stop continuous feeding.



11

## Description of other functions

### Memory function

After a complete power cut, the Vol setting, Timing setting and Int setting will be retained.

### Automatic switching power supply

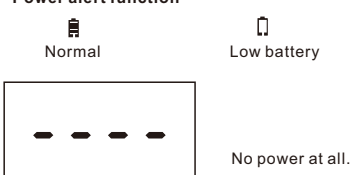
Battery and AC/DC can be used at the same time. AC/DC supply priority, after AC/DC off, Switch to battery power automatically.

### Power supply parameters (Optional)

AC 110-240V 50/60 Hz  
DC 6V 1A



### Power alert function



12

STOP Feeding  
Hold down MODE key and - key for 3 seconds to display stop. Turn off all automatic feeding.  
Short press the - key to restore.



Reset  
Hold the SET key and - key for 3 seconds, Shows RSt. Restored factory Settings.



ERRO mode  
Timing sequent wrong  
reset timing sequent in the order of time.



13

## Trouble shooting:

Display	Cause	Methods
No display Or show: - - -	Low power	Replacement of Batter ies Or power supply
Displays OK action incomplete	Wrong feed type inside Or reduction cube wrong	Check the type of food press the reduction cube
Display OK but no action	The internal parts fall off and become loose	Re-screw and fix it again
Display ERRO	Timing errors	Reset the timing

## Maintenance and Repair

Do not soak in water. Do not put the fish feeder into the closed fish tank  
When long-term idle, must take out the battery  
Do not use non-original power adapter  
Wipe the fish feeder surface with a soft towel if needed.  
Do not put near fountains and air jets.  
If you do not understand the problem, please scan the qr code to view video

14